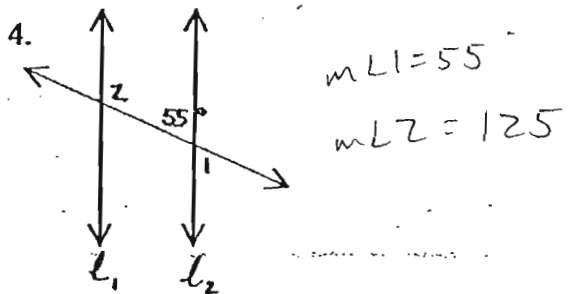
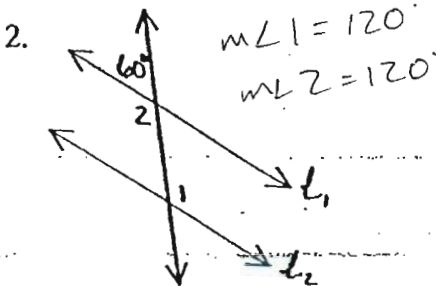
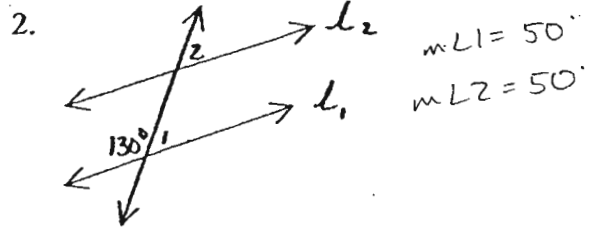
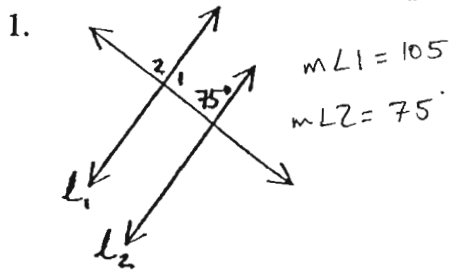


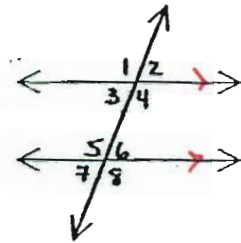
Parallel Lines Worksheet

In problems 1-4, assume that $l_1 \parallel l_2$. Find the measures of $\angle 1$ and $\angle 2$.



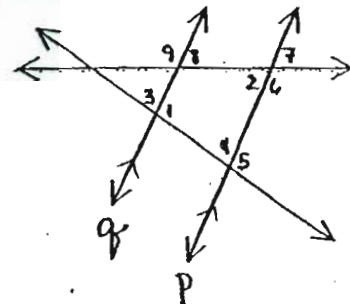
Find the measures of all number angles in the figure for each value on $m\angle 8$.

4. $m\angle 8 = 119^\circ$, $m\angle 1 = 119^\circ$, $m\angle 2 = 61^\circ$, $m\angle 3 = 61^\circ$
 $m\angle 4 = 119^\circ$, $m\angle 5 = 119^\circ$, $m\angle 6 = 61^\circ$, $m\angle 7 = 61^\circ$
5. $m\angle 8 = 126^\circ$, $m\angle 1 = 126^\circ$, $m\angle 2 = 54^\circ$, $m\angle 3 = 54^\circ$
 $m\angle 4 = 126^\circ$, $m\angle 5 = 126^\circ$, $m\angle 6 = 54^\circ$, $m\angle 7 = 54^\circ$
6. $m\angle 8 = 124.5^\circ$, $m\angle 1 = 124.5^\circ$, $m\angle 2 = 55.5^\circ$, $m\angle 3 = 55.5^\circ$
 $m\angle 4 = 124.5^\circ$, $m\angle 5 = 124.5^\circ$, $m\angle 6 = 55.5^\circ$, $m\angle 7 = 55.5^\circ$

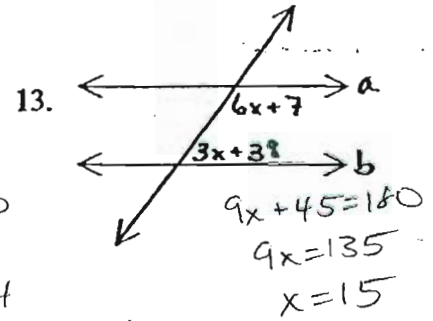
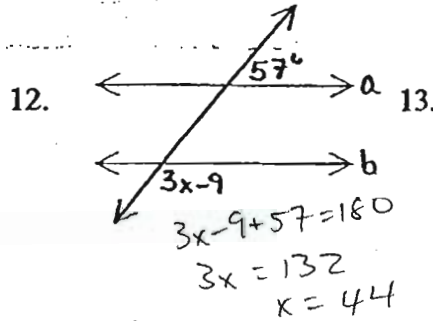
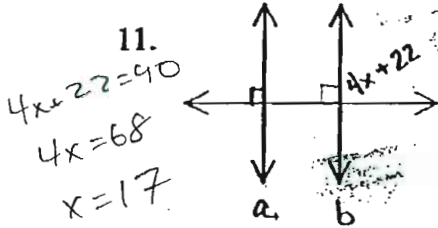
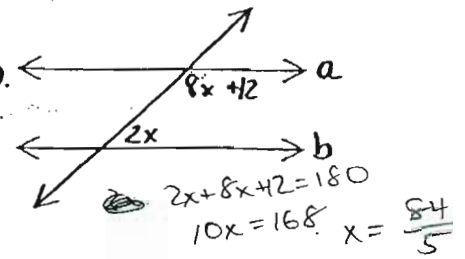
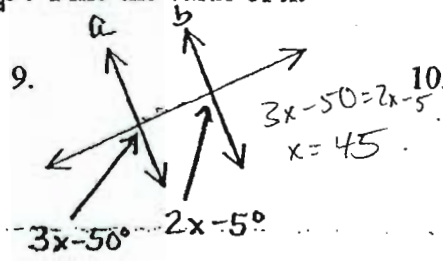
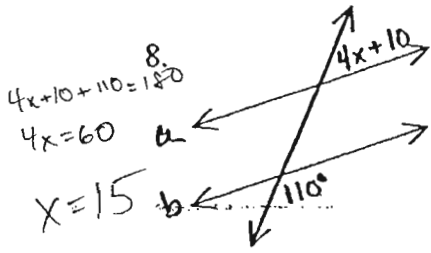


7. Given that $p \parallel q$, $m\angle 1 = 78^\circ$ and $m\angle 2 = 47^\circ$, find the measure of each angle.

- $m\angle 3 = 102$ $m\angle 4 = 102$ $m\angle 5 = 78$
 $m\angle 6 = 133$ $m\angle 7 = 47$ $m\angle 8 = 47$
 $m\angle 9 = 133$



In problems 8-13, assume $a \parallel b$. Find the value of x .



In problems 14-19, $AB \parallel CD$, find the measure of each numbered angle.

